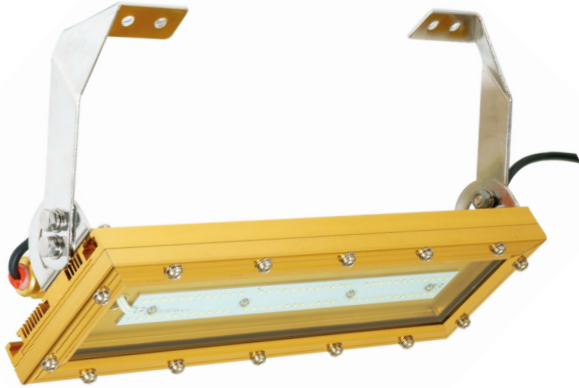
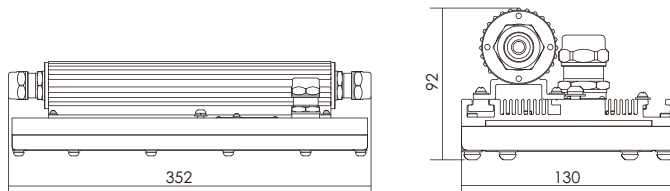


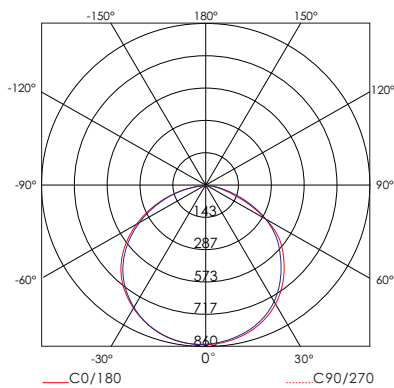
LED Explosion-proof light 20W



DIMENSIONS



LIGHT DISTRIBUTION CURVE



KEY DATA

Power	20W
Luminous Flux	2660lm
Colour Temperature	3000K/4000K/6500K
IP Rating	IP 68
Dimensions	345x130x92mm
Warranty	5 Years Extended

Part Number 3000K	CL-EP-130-20W-01-WW
Part Number 4000K	CL-EP-130-20W-01-NW
Part Number 6500K	CL-EP-130-20W-01-CW

TECHNICAL SPECIFICATIONS

Input Voltage	100~277V AC
Power Factor	>0.95
Warm white(2700-3000K)	2200lm
Natural white(4000-4500K)	2400lm
Cold white(5800-6500K)	2660lm
LED Manufacturer	PHILIPS
LED Type	SMD3030
No. of LEDs	48
Luminous Efficacy	130lm/W
Driver Manufacturer	Lifud/Moso/Meanwell
Total Circuit Power(W)	20W+/-5%
Electrical Class	II
Colour Rendering	>80 CRI
Lamp Viewing Angle	120°
Dimmable(option)	Dali/0-10V
Operating Temp.	-40°C to +50°C
Lifespan	55,000 Hours
Diffuser Material	Tempered glass
Housing Material	Aluminium
Mounting	Clamp,Suspension,Bracket Nondestructive Mount
Weight	4Kg

Application



Onshore oil rig



Oil storage tanks



Offshore oil rig



Chemical Plant



Mine



Gasoline station