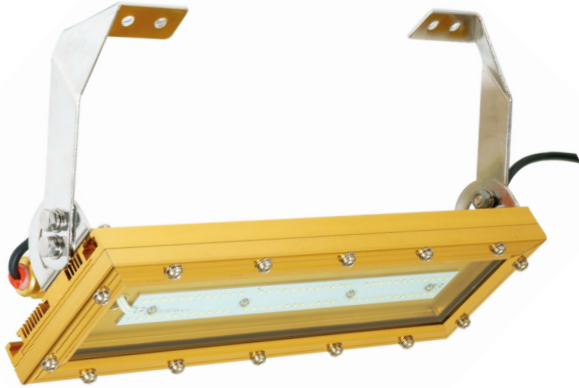


# LED Explosion-proof light 40W



## KEY DATA

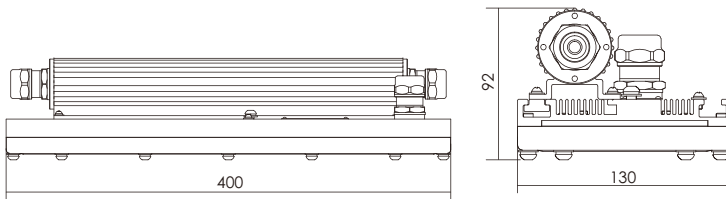
Power	40W
Luminous Flux	5160lm
Colour Temperature	3000K/4000K/6500K
IP Rating	IP 68
Dimensions	400x130x92mm
Warranty	5 Years Extended

Part Number 3000K	CL-EP-130-40W-01-WW
Part Number 4000K	CL-EP-130-40W-01-NW
Part Number 6500K	CL-EP-130-40W-01-CW

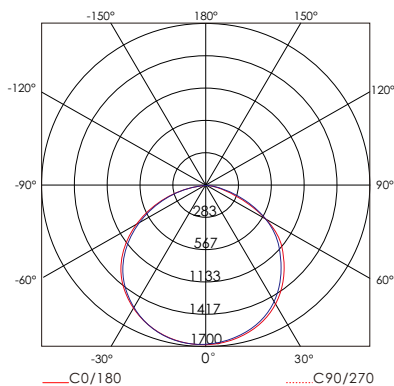
## TECHNICAL SPECIFICATIONS

Input Voltage	100~277V AC
Power Factor	>0.95
Warm white(2700-3000K)	4400lm
Natural white(4000-4500K)	4900lm
Cold white(5800-6500K)	5160lm
LED Manufacturer	PHILIPS
LED Type	SMD3030
No. of LEDs	72
Luminous Efficacy	130lm/W
Driver Manufacturer	Lifud/Moso/Meanwell
Total Circuit Power(W)	40W+/-5%
Electrical Class	II
Colour Rendering	>80 CRI
Lamp Viewing Angle	120°
Dimmable(option)	Dali/0-10V
Operating Temp.	-40°C to +50°C
Lifespan	55,000 Hours
Diffuser Material	Tempered glass
Housing Material	Aluminium
Mounting	Clamp, Suspension, Bracket Nondestructive Mount
Weight	7Kg

## DIMENSIONS



## LIGHT DISTRIBUTION CURVE



## Application



Onshore oil rig



Oil storage tanks



Offshore oil rig



Chemical Plant



Mine



Gasoline station